

ML-LITE™

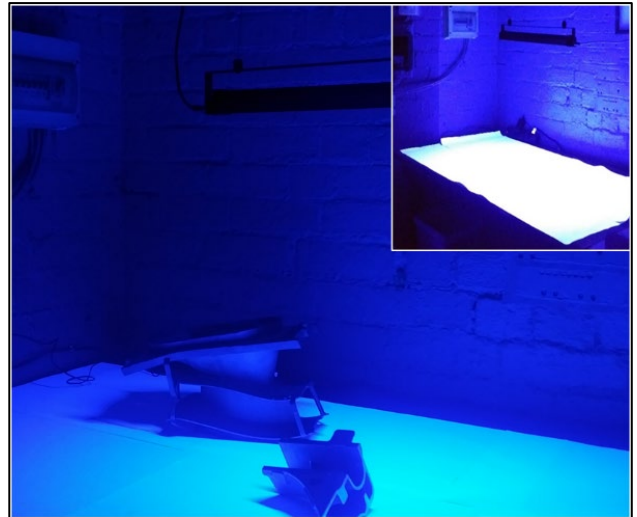
Detection and Sizing Machine Vision FPI Overhead Lamp

Inspection Tech are pleased to launch the revolutionary ML-Lite™

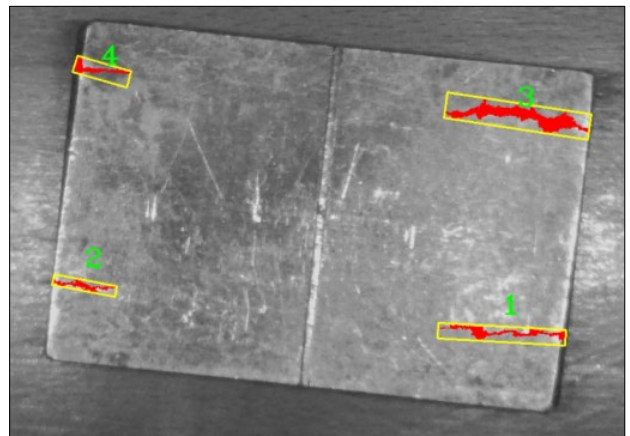
100% designed and built in the UK, it is a single unit that combines a lightweight, low form-factor stationary overhead UV illumination source with sophisticated machine vision capabilities that automatically detect and size fluorescent indications.

The system' automatically detects all relevant indications and the software (i) sizes them (ii) measures their area and (iii) automatically overlays their location on a photographic image of the part. ALL inspections (pass or fail) get permanently recorded in a database for 100% QA / compliance purposes and a report is generated in just seconds.

- **100% indication identification**
- **100% quality control**
- **Improved Gauge R&R:**
- **Significant operational cost savings**
- **Increased productivity**
- **Rapid report generation**



Very wide and uniform beam



Serial Number:	79678
Description:	Aluminium part
Inspector:	Martin
Location:	Leamington
Batch ID:	314IS
Nº of defects:	4
Defect 1	Area = 50mm ² / Long Edge = 19.5mm
Defect 2	Area = 26mm ² / Long Edge = 9.5mm
Defect 3	Area = 75mm ² / Long Edge = 22mm
Defect 4	Area = 22.5mm ² / Long Edge = 8.5mm

A report with location, sizing and area of indications, is produced in seconds

Features

Integrated large beam stationary lamp and sophisticated detection and sizing machine vision system in single, lightweight, low form-factor unit

A software-based machine vision system to assist normal visual inspection. Fully compatible with: -

- The requirements of ASTM 2297
- The E 165 and E 1417 standards

Benefits

- 100% Indication Detection
- 100% Quality Audit
- Improved Gauge R&R:
- Significant operational cost savings
- Increased productivity
- Reduced operator fatigue

Product Specifications

Intensity	Typical irradiance of 2000 μ W/cm ² at 38cm
Wavelength	UV-A, peak at 365 \pm 5nm
Start-Up Time	Full output power < 2 Sec
Power	Mains
Beam profile at 38 cm	55 cm x 30 cm / 22" x 12"
Working Temperature	0° - 50° C (automatic cut-off)
Dimensions	670mm x 75mm x 50mm (23.5" x 3" x 2")
Mounting	Metal supports
Weight	< 2.5kg (5.5lb)
Certifications	<ul style="list-style-type: none">• Rolls Royce RRES90061• Airbus AITM6-1001• ASTM E3022
Warranty	2 Years



100% Designed and Built in the UK