

UVEE™ Big Beam® Intelligent Lamp

The Uvee Big Beam® has the largest beam and lowest weight of any lamp in its class. It is an intelligently controlled, hand-held UV Lamp for fluorescent non-destructive testing applications.

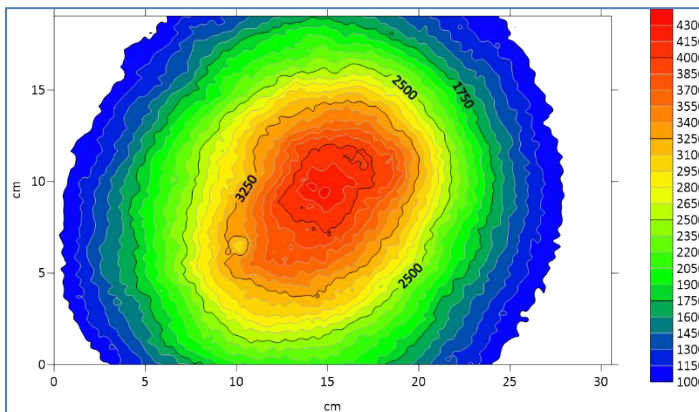


Total compliance with: -

- Rolls Royce RRES90061
- Airbus AITM6-1001
- ASTM E3022

The Uvee™ Big Beam® has an ITECP Embedded Controller Processing unit. The ITECP provides the following benefits:-

- Far tighter control of luminous power outputs
- Optimised battery management provides the longest operating time.
- UV output remains at the required level by compensating for temperature of the LEDs.



Extremely uniform, wide field beam



Extremely UV Stability and Long Battery Life

Product Specifications

Beam	Uniform, wide field beam
Beam Diameter > 1000 $\mu\text{W}/\text{cm}^2$ @38cm	26 cm
FWHM	< 15nm
Irradiance	Typical irradiance of 4700 $\mu\text{W}/\text{cm}^2$
Wavelength	UV-A, peak at (365+ 5) nm
Visible Light	Less than 10 lux@ 38 cm
Start-Up Time	Full output power < 10 Sec
Power	Battery (internal as standard) or mains
Continuous Runtime	4 Hrs
Operation	Lamp can be used while the battery is charging
Charging Time	Approx. 3 Hrs
Low Battery Indicator	At 15% (approx. 40 mins remaining)
Working Temperature	0°- 45° C
Dimensions	80 x 200 x 190mm (3.2" x 8" x 7.5")
Weight (Inc. Batteries)	750g (1.7lb)
Mounting	Tripod mount 1/4, 20 TPI
Warranty	2 Years (excl. Consumables)
Certifications	<ul style="list-style-type: none"> • Rolls Royce RRES90061 • Airbus AITM6-1001 • ASTM E3022



100% Designed and Built in the UK